

NAME : \_\_\_\_\_

# ENTRANCE EXAMINATION - THEORY

SOMK, ODENSE, 2M

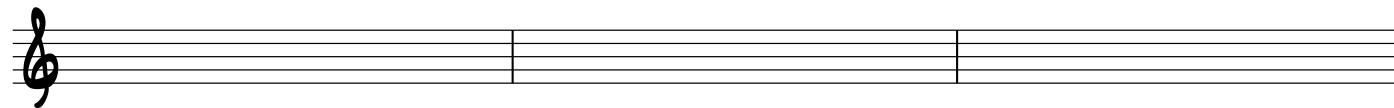
WRITE THE SCALES :



F#-MIXOLYDIAN

A $\flat$ -DORIAN

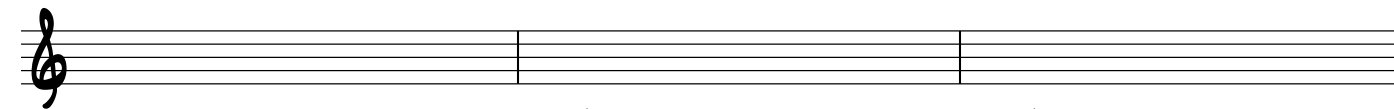
B $\flat$ -AEOLIAN



C#-LYDIAN

B-PHYGIAN

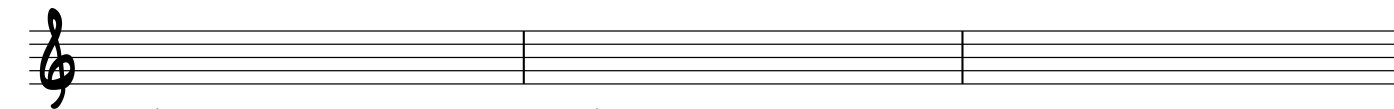
D#-LOCRIAN



A $\flat$ -MAJOR

F#-HARMONIC MINOR

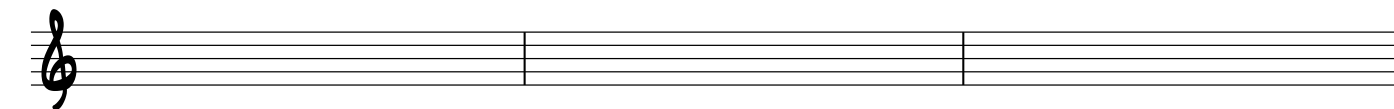
D#-PHYGIAN



F#-MAJOR

G#-LOCRIAN

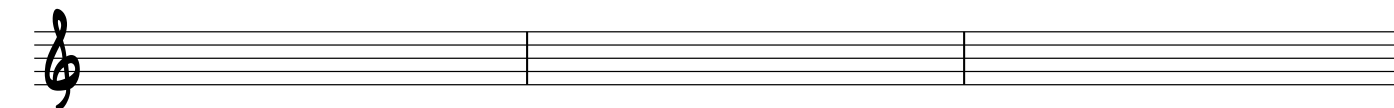
C-DORIAN



F-MELODIC MINOR

E-LYDIAN

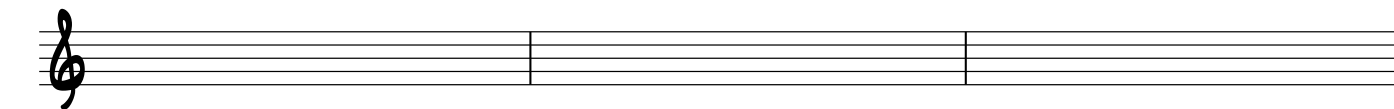
D $\flat$ -MIXOLYDIAN



C-HARMONIC MINOR

B-AEOLIAN

G $\flat$ -MAJOR



D $\flat$ -MELODIC MINOR

B $\flat$ -MIXOLYDIAN

C#-DORIAN

WRITE THE NOTES IN THE CHORDS :

Fsus4                  Abm7                  Eb9#11                  F#MA7#5                  Bbm9                  Db7sus4

Bb6                  D#                  C0                  G#M7b5                  D6/9                  Em9

WRITE FIGURATIONS OF THE FOLLOWING CHORDS (ALL SHOWN HERE WITH ROOT AS THE BOTTOM-NOTE) :